

## Used Organs

George Kilgen & Son / Roy Redman



Roy A. Redman tracker organ, 1987 opus 52, II manuals 13 ranks. The original builder was George Kilgen & Son CA. 1907. In 1987, the organ was re-configured to make room for a new Great IV Mixture. A new 8' Rohr Flute replaced the original Great 8' Melodia. In the Swell, the 8' Violin Diapason was replaced with a new 8' Trumpet. A new 2' Principal was installed replacing the 8' Celeste.

New casework, in the Kilgen style was added to the sides. All pallets were re-leathered and all trackers were replaced with aluminum. A new ceiling for the Great division helps to project the sound of the entire organ. The pump handle was removed prior to the 1987 re-configuration. The end result is an organ that is capable of playing most types of music instead of being confined to the romantic period. "Pipe organ has been erected in our shop so please come by and take it for a spin!"

Stoplist on next page

## Stoplist

### Great

8 Open Diapason

8 RohrFlute

4 Octave

IV Mixture

### Pedal

16 Bourdon

GT-PD 8

SW-PD 8

### Keys

Manual = 61

Pedal = 30

### Swell

8 Stopped Diapason

8 Salicional

4 Flute Harmonic

2 Principal

8 Trumpet

Tremolo

Radiating, concave pedalboard

**Vanderbilt University, Blair School of Music – Nashville, TN**  
**Turner Recital Hall, 24 Rank Reuter**



Vanderbilt continued

The organ was removed from Peabody College in August of 1981 and transported to our shop in Eagleville. There it was rebuilt, redesigned, and enlarged. A moveable platform was made for the console so it could be stored off stage while not in use. The white console was refinished to match the furnishings of its new home.

Casework to cover the mechanism of the wind chests was designed to blend with the room's décor. In 1986, we moved the existing 1' Great Mixture to the Swell division and a new 1 1/3 Mixture was installed in the Great division along with a new 8' Trumpet. Also, a full length 16' Pedal Posaune was installed. A total of 276 pipes were added. All the pipes were built by A.R. Schopp's Sons.

The Swell division is in two separate enclosures and can be enlarged for future additions. The great division has two main wind chests and several off chests. The Pedal division is also on several wind chests. This allows for redesigning the organ to fit a new location; very practical. The blower and all related A/C electrical equipment are in excellent condition. The organ can be redesigned and installed by us or your organ builder. It is being stored in climate controlled storage. We recently re-leathered all the primary pouches, valves and stop actions. All the pipes have been cleaned. Each note action has been tested. The console is in good working condition. There is ample space on the name board to add new stops. It's a fine organ and can be had for a fraction of the cost of a new organ.

<b>Great</b>	<b>Swell</b>	<b>Pedal</b>
16 Quintade	8 Gedeckt	16 Subbass
8 Principal	8 Gemshorn	16 Quintade GT
8 Holzflote	8 Gems Celeste	10 2/3 Quint (Ext)
8 Quintade (Ext)	4 Rohrflote	8 Principal
4 Octave	2 2/3 Nasat	8 Subbass (Ext)
4 Quintade (Ext)	2 Waldflote	8 Quintade (Ext)
2 Super Oct	III Mixture	4 Octave (Ext)
1 1/3 Mixture	8 Hautbois	4 Quint (Ext)
8 Trumpet	Tremolo	16 Posaune

## Rodgers with Speaking Pipes



The pipes are mounted on the flawless mahogany windchests with built-in Schwimmers. The voicing is wonderful. The Laukhuff blower feeds a high-pressure bellows that feeds the Schwimmers. It has 8 extended ranks as follows:

Console Dimensions: Height 50", Width 65 3/4", Depth without pedal board 35", Depth with pedal board 53 1/4", Console weight: 760 lbs.

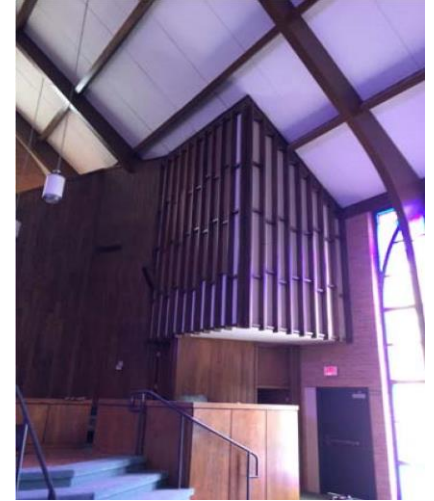
Main Chest Dimensions: Width 3', Length 8'

### Stop List

8'	Principal	85 pipes
8'	Gemshorn TC	85 pipes
4'	Octave	61pipes
8'	Gedeckt	85 pipes
8'	Rohrflute	85 pipes
2 2/3	Nazard	61 pipes
1 3/5	Tierce	49 pipes



**1964 Schantz, Opus 616**  
**Located at First Baptist Church - Covington, TN**



Great

8	Open Diapason	61
8	Bourdon	CH
4	Octave	61
2	Fifteenth	61
III	Mixture	122*

Swell

16	Rohrflöte	12
8	Rohrflöte	61
8	Viola	61
8	Viola Celeste	49
4	Gemshorn	61
2	Octavin	12
8	Trompette	61
4	Clarion	12

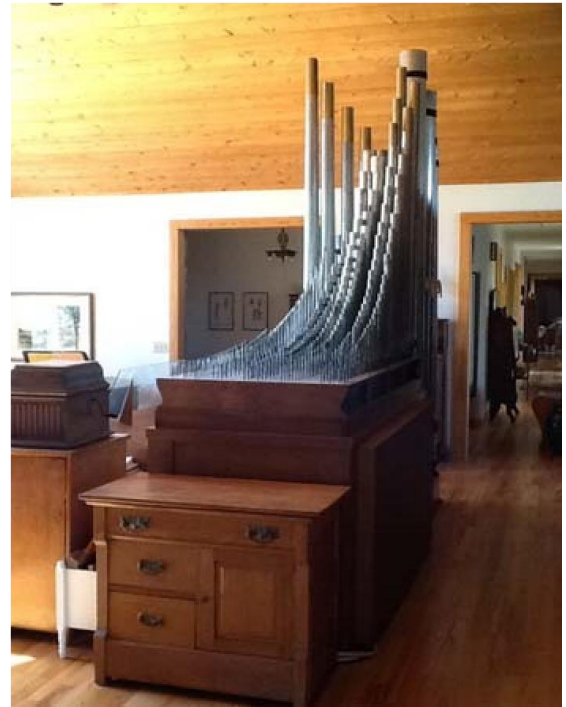
Choir

8	Bourdon	61
8	Flauto Dolce	61
8	Flute Celeste	49
4	Koppelflöte	61
2	Flöte	12
1 1/3	Quinte	61
8	English Horn	61

Pedal

16	Principal	32
16	Bourdon	12 CH
16	Rohrflöte	SW
8	Octave	12
8	Bourdon	CH
8	Rohrflöte	SW
4	Super Octave	12

## 1957 McManis Organ, No. 36



The organ was originally built in 1957 for William Weaver of Decatur, GA. At one time the organ was a practice instrument at Macon College (now named something else having merged with another college). We acquired the instrument from The Lutheran Church of the Redeemer in Macon, GA when they decided to renovate their sanctuary and purchase a larger instrument. The organ has been in our house in Tuscaloosa (1997-2006) and now in Birmingham.

Studio Organ, Built for the William Weaver Residence

Wind chest: 9'-4" long x 3' deep x 9'-8" tall

Console: 56" long x 43" deep (w/pedalboard), 7 rank (extended), Direct electric **Asking Price \$19,500**

## Keates Tracker Organ



Built in the 1980's and located in Hamilton, Ontario, Canada this beautiful tracker organ is perfect for a small church or home.

One manual with wooden keys and radial pedalboard (top note is D).

Three stops: Gedeckt 8, Flute 4, Principal 2. The metal pipes and blower are top end Laukhuff.

Depth: 34", Width: 57", Height: 86"

Asking \$16,500



## 1950's Etsy Portable Reed Organ



Similar unit being played in field during WWII

Asking \$1,200.00, does not include crating and shipping

## Consoles

Reuter III Manuel Console. Great working condition when removed from church.



Shantz 3 Manuel Console





## Moller II Manual



---

**Reisner Console 2 Manual**, Dark Oak with roll top, 31 Stop Tabs, pedal board, bench and roll top. Good working condition.



**Everette Orgatron Series 600 Electronic Organ**, five-stop instrument. It consists of two manuals and pedal clavier and conforms to the recommendations and standards of the AGO



---

**Allen Console Shell**



Would make a neat roll-top desk

## Miscellaneous Items

Bellows, Tremolos, Facades, Shades, Magnets, Solenoids, Draw Knobs, Music Racks, Benches, 100wire electrical cable (PVC), Pipe Chests, Combination Actions, Swell Machines, Winkers, Rectifiers, Chime Actions and much, much more!!!

- Assorted Reisner Switches, Austin Primary Magnets, Kilgen, Schantz, and Moller C-A's.
- Spencer Orgoblo Junior 1/3 HP, 3500 RPM, 400 CFM, 3.5 Pressure
- We have Reisner 150 & 125-Ohm chest magnets, several hundred in stock each.

## **5 Rank Pitman Chest**



Chest measures W 3' x L 8' 9", Ranks are: 8' Vox Humana, 8' Oboe, 8' Salicional, 8' Celeste TC, 2' Block Flute

61 Note Primary, 5" Wind Pressure, From Presbyterian Church in Columbia.



**Great Main Pitman Chest**, diatonic 61 notes with 2' Twelfth, 4' Octave, 8' Open Diapason, II Mixture, From Baptist Church in Columbia.



Other used chests available:

- 8' Chimney Flute, 42 notes
- 16' Leiblich, 1-12
- Flute A' Cheminee, 19 notes, F#4-C6 / 4' Celeste, 49 notes
- 8' Gemshorn, 15 notes low octave
- 16' Bourdon, 16 notes
- 16' Bourdon, 1-12
- 4' Pedal Gemshorn, 41 notes, D#1 and up

## Skinner Relay



- 30 Skinner relays. Ten gangs on boards.
  - Many more KA switches available in stock.
- 

## Stop rail - KA Sams, setter board combination action fully wired



## KA relay for one 61 note divisions



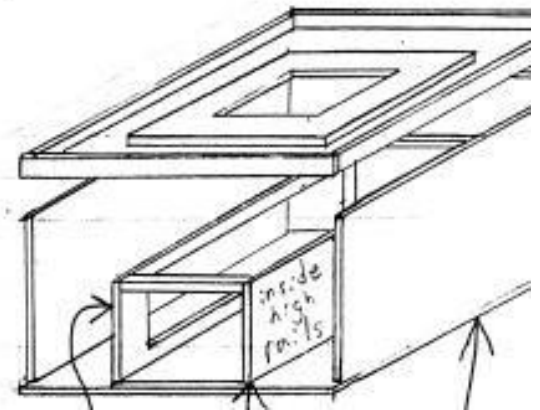
## Tremolos



- Medium OSI 3-6 stops 4"-6" WP 26lbs.
- Moller's latest model, one size fits all.

---

## Bellows



New floating top reservoirs for sale complete with built-in curtain valve, spring rails and springs are included.

Size 18"x24", 7 in stock asking: \$745

Size 24"x30", 6 in stock asking: \$845

Size 36"x48", 3 in stock asking: \$1290



## Chime Action Sets



### Moller Chimes

1-21 Moller - Deagan Solid action totally rebuilt,  
graduated, hollow with no end cap.

Asking \$3,900



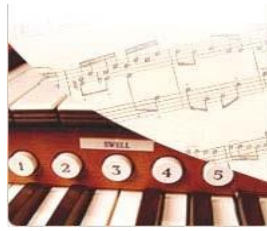
1-25 Mass Row, not graduated, hollow with no end cap

### **Other sets available:**

**Shop B, 1-25 Mayland, silver, hollow, graduated**

**Shop B, 1-21 Mass Rowe, FPC Humbolt, not graduated**

## Keyboards



- Klann II Manual with Walnut key cheeks, 15' Plastic keys, spring coils in back and switches in the back.
- II Manual with black paint key cheeks, 15 ¾" Ivory keys with 12 missing, regular touch, butterfly springs in front.
- Moller II Manual with walnut key cheeks, 17 ½" Ivory tops with Swell tops coming off and Great tops in good shape, switches removed from Great, coil springs in middle, switches in back.
- II Manual with Mahogany key cheeks, 10 ½" bone keys that are thin and chips on 1/3 of keys.
- II Manual with black key cheeks, 14 ½" "Ivoren" keys with all tops good, coil springs in back attached to wipers.
- Reisner II Manual with Cherry key cheeks, 17 ½" plastic key tops, coil springs 2/3 from front switches in back (replacement ivories available).



## Equipment

**Four Wood Presses Available:** 3' tall x 25" wide, steel wood presses.



## **Blowers**

