



# Milnar Organ Company

## Sale Items

---

*Please take time to read about our Residence Organs, just click on Link.*

[New Custom Residence Pipe Organs For Sale](#)

---

### Organ Pipes Available

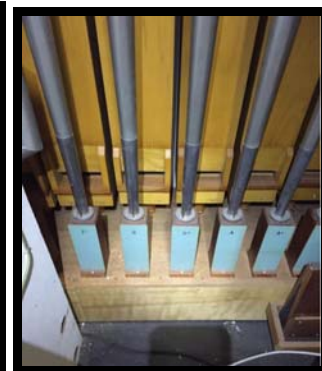


[Used Pipe Inventory List](#)

---

# Used Organs

Gress-Miles Organ Available, Must be removed by April 15th!





Gress-Miles Organ located in old Redeemer Building, bought and paid for initially by the Redeemer family, and designed by myself, dedicated in late Summer, 1978, building then bought by Dominion International who currently worships there and now offers this 47 Rank 3 manual Classic Pipe Organ for sale. I'm present at our second Open House 2-4pm, 200 Telephone Rd. at Eastwood Street. Organists are invited to visit and play the instrument. Please call us for more information.

### Specifications

#### **GREAT:** (Manual I) enclosed)

16' Rohrgedeckt 12  
 8' Principal 49 (12=PED)  
 8' Rohrfloete 61  
 8' Harmonic Flute (12 Rfloete)  
 4' Octave 61  
 4' Spitzfloete 61  
 2' Superoctave 61  
 2' Waldfloete 12

IV-VI Mixture 330

16' Dulzian (POS)  
 8' Trumpet 61  
 4' Clarion 12  
 Tremulant

#### **POSITIV:** (Manual II,

8' Montre 12  
 8' Holzgedeckt 61  
 8' Flauto Dolce 61  
 8' Flute Celeste 49 (TC)  
 4' Principal 61  
 4' Rohrfloete 61  
 4' Flauto Dolce 12  
 4' Flute Celeste 12

2 2/3' Nasat 61

2' Octave 61  
 2' Rohrpfeiffe 12  
 1 3/5' Tierce 61  
 1 1/3' Quintfloete 12



**PEDAL:**

32' Acoustic Bass  
 16' Principal 12  
 16' Subbass 12  
 16' Contre Viole (SW)  
 8' Principal 32  
 8' Rohrgedeckt (GT)  
 8' Bourdon (SW)  
 5 1/3' Quintfloete  
 4' Octave 12  
 4' Harmonic Flute (GT)  
 2' Superoctave 12  
 2' Harmonic Flute (GT)  
 V-VI Mixture 180  
 32' Basse de Cornet  
 16' Posaune 12  
 16' Basson (SW)  
 16' Dulzian (POS)  
 8' Trumpet (GT)  
 8' Basson (SW)  
 4' Cromorne (POS)

1' Siffloete 12

I Zimbelfloete

III-V Scharf 269

16' Dulzian 12

8' Cromorne 61

Tremulant

**SWELL:** (Manual III, enclosed)

16' Contre Viole 12

8' Bourdon 61

8' Viole de Gambe 61

8' Voix Celeste 61

4' Traversefloete 61

4' Octave Viole 12

4' Octave Celeste 12

2 2/3' Quint 49 (TC)

2' Principal 61

2' Piccolo

1 3/5' Terz 49 (TC)

1 1/3' Quint 12

1' Octave

III-IV Zimbel 232

16' Basson 12

8' Trompette 61

8' Hautbois 61

4' Clairon 12

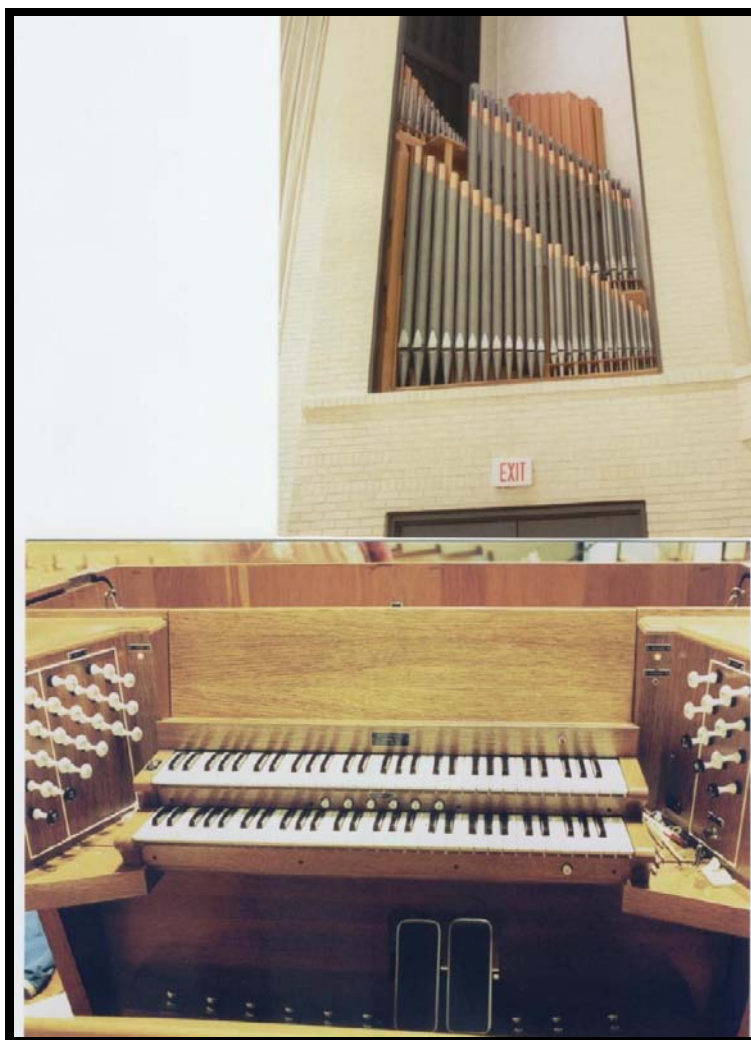
Tremulant

**Octaves Graves**

---

Lifeway Christian Resources- Nashville, TN

1968 II Manual, 23 Rank Wicks Pipe Organ

**Great**

- 8 Principal**
- 8 Gedeckt**
- 4 Principal**
- 4 Spillpfeife**
- 2 Principal**
- IV Mixture**
- 8 Trompette (SW)**

**Swell to Great 16**

**Swell to Great**

**Swell to Great 4**

**Swell**

**8 Rorhflute**

**8 Erzahler**

**8 Erzahler Celeste**

**4 Principal**

**4 Nachthorn**

**2 Flute**

**1 1/3 Quint TC**

**III Mixture**

**8 Trompette**

**4 Hautbois**

**Swell 16**

**Unison Off**

**Swell 4**

**Pedal**

**16 Subbass (1-32)**

**16 Gedeckt (GT 13-32)**

**8 Principal Bass (1-32)**

**8 Flute (SW)**

**4 Choral Bass (GT)**

**16 Contre Trompette (SW)**

**4 Hautbois**

**Great to Pedal**

**Swell to Pedal**

**Please call for information 615-274-6400**

---

## 1906 Kilgen Organ Available from UMC West Nashville, TN



### Specifications

#### Great

- 8 Unison Bass
- 8 Open Diapason
- 8 Melodia tc
- 8 Dulciana tc
- 4 Octave
- 2 Fifteenth

#### Swell

- 8 Geigen Diapason
- 8 Stopped Diapason (sic)

- 8 Salicional tc  
4 Flute Harmonique  
Tremolo

## Pedal

16 Pedal Bourdon  
615-274-6400

Asking \$19,500 Please call for more information

---

### George Kilgen & Son / Roy Redman



Roy A. Redman tracker organ, 1987 opus 52, II manuals 13 ranks. The original builder was George Kilgen & Son CA. 1907. In 1987, the organ was re-configured to make room for a new Great IV Mixture. A new 8' Rohr Flute replaced the original Great 8' Melodia. In the Swell, the 8' Violin Diapason was replaced with a new 8' Trumpet. A new 2' Principal was installed replacing the 8' Celeste.

New casework, in the Kilgen style was added to the sides. All pallets were re-leathered and all trackers were replaced with aluminum. A new ceiling for the Great division helps to project the sound



of the entire organ. The pump handle was removed prior to the 1987 re-configuration. The end result is an organ that is capable of playing most types of music instead of being confined to the romantic period.

"Pipe organ has been erected in our shop so please come by and take it for a spin!"

### **Stoplist**

#### **Great**

8 Open Diapason

8 RohrFlute

4 Octave

IV Mixture

#### **Pedal**

16 Bourdon

GT-PD 8

SW-PD 8

#### **Keys**

Manual = 61

Pedal = 30

#### **Swell**

8 Stopped Diapason

8 Salicional

4 Flute Harmonic

2 Principal

8 Trumpet

Tremolo

Radiating, concave pedalboard

**Please Call Us For Information 615-274-6400**

---

Vanderbilt University, Blair School of Music- Nashville, TN.

Turner Recital Hall, 24 Rank Reuter Organ



The organ was removed from Peabody College in August of 1981 and transported to our shop in Eagleville. There it was rebuilt, redesigned, and enlarged. A moveable platform was made for the console so it could be stored off stage while not in use. The white console was refinished to match the furnishings of its new home.

Casework to cover the mechanism of the wind chests was designed to blend with the room's décor. In 1986 we moved the existing 1' Great Mixture to the Swell division and a new 1 1/3 Mixture was installed in the Great division along with a new 8' Trumpet. Also, a full length 16' Pedal Posaune was installed. A total of 276 pipes were added. All of the pipes were built by A.R. Schopp's Sons.

The Swell division is in two separate enclosures and can be enlarged for future additions. The great division has two main wind chests and several off chests. The Pedal division is also on several wind chests. This allows for redesigning the organ to fit a new location; very practical. The blower and all related A/C electrical equipment are in excellent condition. The organ can be redesigned and installed by us or your organ builder. It is being stored in climate controlled storage. We recently re-leathered all of the primary pouches, valves and stop actions. All of the pipes have been cleaned. Each note action has been tested. The console is in good working condition. There is ample space on the name board to add new stops. It's a fine organ and can be had for a fraction of the cost of a new organ.

Great	Swell	Pedal
16 Quintade	8 Gedeckt	16 Subbass
8 Principal	8 Gemshorn	16 Quintade GT
8 Holzflote	8 Gems Celeste	10 2/3 Quint (Ext)
8 Quintade (Ext)	4 Rohrflote	8 Principal
4 Octave	2 2/3 Nasat	8 Subbass (Ext)
4 Quintade (Ext)	2 Waldflote	8 Quintade (Ext)
2 Super Oct	III Mixture	4 Octave (Ext)
1 1/3 Mixture	8 Hautbois	4 Quint (Ext)
8 Trumpet	Tremolo	16 Posaune

Please call us for information 615-274-6400

## Rodgers Organ with speaking pipes!

**The pipes are mounted on the flawless mahogany windchests with built-in Schwimmers. The voicing is wonderful. The Laukhuff blower feeds a high pressure bellows that feeds the Schwimmers. It has 8 extended ranks as follows:**

**Console Dimensions:** Height 50", Width 65 3/4", Depth without pedal board 35", Depth with pedal board 53 1/4", Console weight: 760 lbs.

**Main Chest Dimensions:** Width 3', Length 8'

### Stop List

8'	Principal	85 pipes
8'	Gemshorn TC	85 pipes
4'	Octave	61pipes
8'	Gedeckt	85 pipes
8'	Rohrflute	85 pipes
2 2/3	Nazard	61 pipes
1 3/5	Tierce	49 pipes

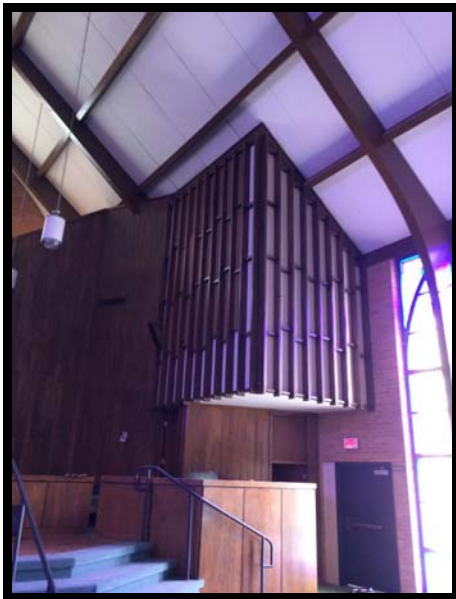
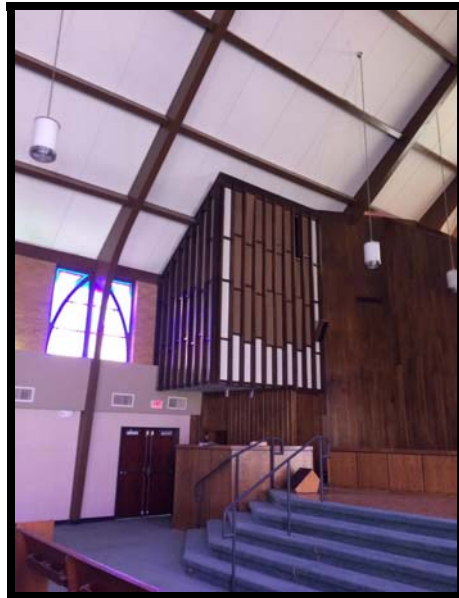


---

## Shantz Opus 616, 1964 Available

FBC Convington , TN.





### Great

8	Open Diapason	61
8	Bourdon	CH
4	Octave	61
2	Fifteenth	61
III	Mixture	122*

### Choir

8	Bourdon	61
8	Flauto Dolce	61
8	Flute Celeste	49

4	Koppelflöte	61
2	Flöte	12
1 1/3	Quinte	61
8	English Horn	61

**Swell**

16	Rohrflöte	12
8	Rohrflöte	61
8	Viola	61
8	Viola Celeste	49
4	Gemshorn	61
2	Octavin	12
8	Trompette	61
4	Clarion	12

**Pedal**

16	Principal	32
16	Bourdon	12 CH
16	Rohrflöte	SW
8	Octave	12
8	Bourdon	CH
8	Rohrflöte	SW
4	Super Octave	12

**Please Call For Information 615-585-8539**

---

McManis Organ Co. 1957 No. 36



**The organ was originally built in 1957 for William Weaver of Decatur, GA. At one time the organ was a practice instrument at Macon College (now named something else having merged with another college). We acquired the instrument from The Lutheran Church of the Redeemer in Macon, GA when they decided to renovate their sanctuary and purchase a larger instrument. The organ has been in our house in Tuscaloosa (1997-2006) and now in Birmingham.**

Studio Organ, Built for the William Weaver Residence

Wind chest: 9'-4" long x 3' deep x 9'-8" tall

Console: 56" long x 43" deep (w/pedalboard), 7 rank (extended), Direct electric **Asking Price \$19,500**

---

## Keates Tracker Organ



Built in the 1980's and located in Hamilton, Ontario, Canada this beautiful tracker organ is perfect for a small church or home.

One manual with wooden keys and radial pedalboard (top note is D).

Three stops: Gedeckt 8, Flute 4, Principal 2. The metal pipes and blower are top end Laukhuff.

Depth: 34", Width: 57", Height: 86"

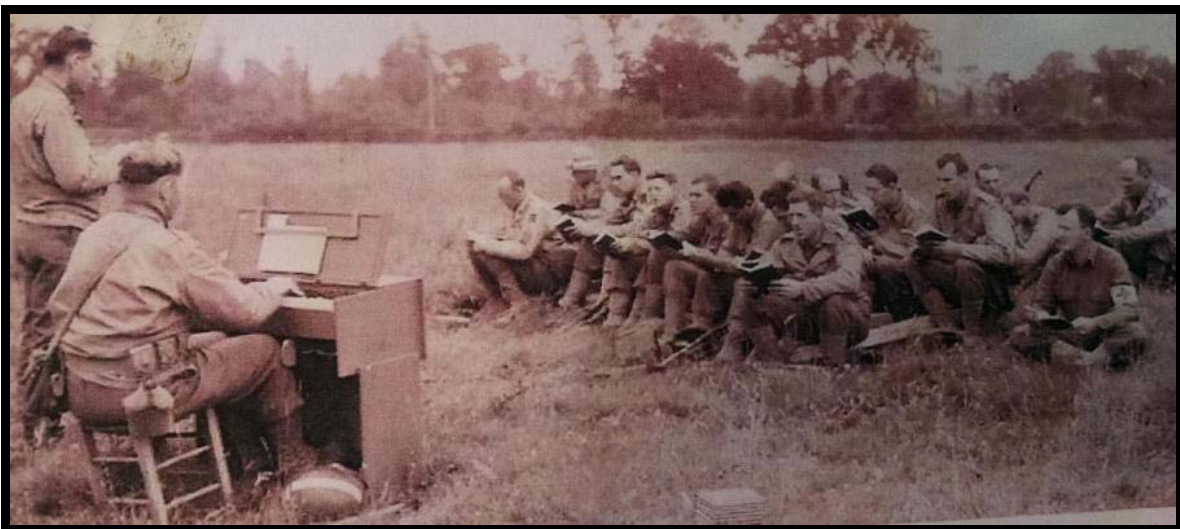
**Asking Price: \$16,500**

---

### Estey Portable Reed Organ 1950's







Similar unit being played in field during WWII

Asking \$1,200 does not include ship and crate.

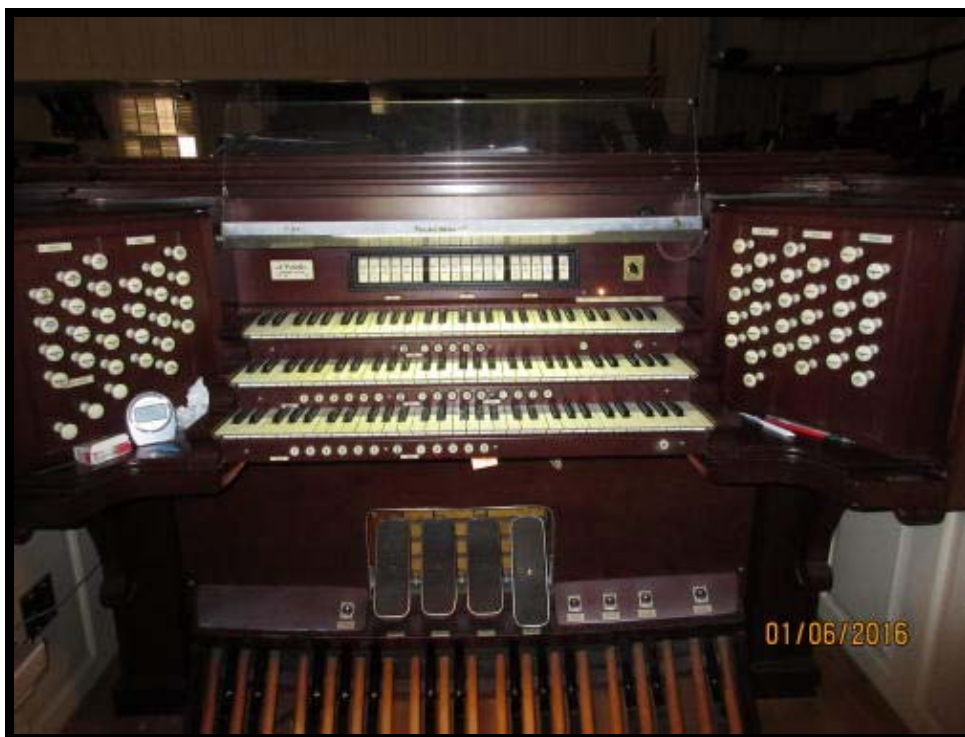
---

## Consoles

- Reuter 3 Manuel Console. Great working condition when removed from church.



- M.P. Moller 3 Manuel Console Opus 9221, 1959. Was in good working condition when removed from church.



- 

Shantz 3 Manuel Console



- 

Moller 2 Manual





- **Reisner Console 2 Manual**, dark oak with roll top, 31 Stop Tabs, good working condition. pedal board and bench, roll top.



- **Everette Orgatron Series 600 Electronic Organ**, five-stop instrument. It consists of two manuals and pedal clavier and conforms to the recommendations and standards of the AGO.



- Allen console shell, could be used for roll-top desk.





Bellows, Tremolos, Facades, Shades, Magnets, Solenoids, Draw Knobs, Music Racks, Benches, 100-wire electrical cable (PVC), Pipe Chests, Combination Actions, Swell Machines, Winkers, Rectifiers, Chime Actions and much, much more!!!

- Assorted Reisner Switches, Austin Primary Magnets, Kilgen, Schantz, and Moller C-A's.
- Spencer Orgoblo Junior 1/3 HP, 3500 RPM, 400 CFM, 3.5 Pressure
- We have Reisner 150 & 125-Ohm chest magnets, several hundred in stock each.

## 5 Rank Pitman Chest



Chest measures W 3' x L 8' 9", Ranks are: 8' Vox Humana, 8' Oboe, 8' Salicional, 8' Celeste TC, 2' Block Flute

61 Note Primary, 5" Wind Pressure, From Presbyterian Columbia.





- Great Main Pitman Chest, diatonic 61 notes with 2' Twelfth, 4' Octave, 8' Open Diapason, II Mixture, From Baptist Columbia.

### Other used chests available:

- 8' Chimney Flute - 42 notes
- 16' Lieblick - 1-12
- Flute A'Cheminee - 19 notes F#4-C6, same chest has 4' Celeste - 49 notes
- 8' Gemshorn - 15 notes low octave
- 16' Bourdon - 16 notes
- 16' Bourdon - 1-12
- 4' Ped Gems - 41 notes, D#1 up

---

## Skinner Relay





- 30 Skinner relays at each and 42 KA switches at . Ten gangs on boards.
- Many more KA switches available in stock.



- Stop rail - KA Sams, setter board combination action fully wired
- KA relay for one 61 note divisions

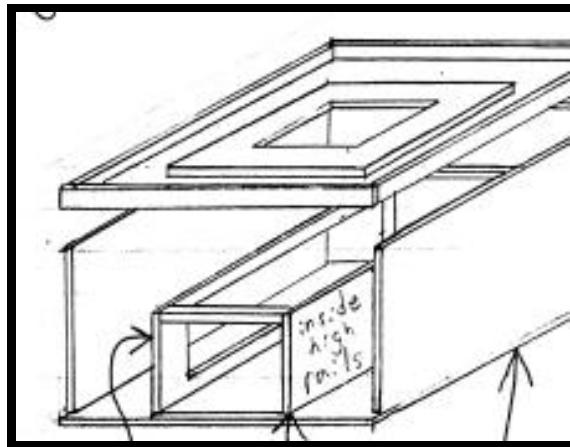
## Tremolos



- Medium OSI 3-6 stops 4"-6" WP 26lbs.
- Moller's latest model, one size fits all.

## Bellows





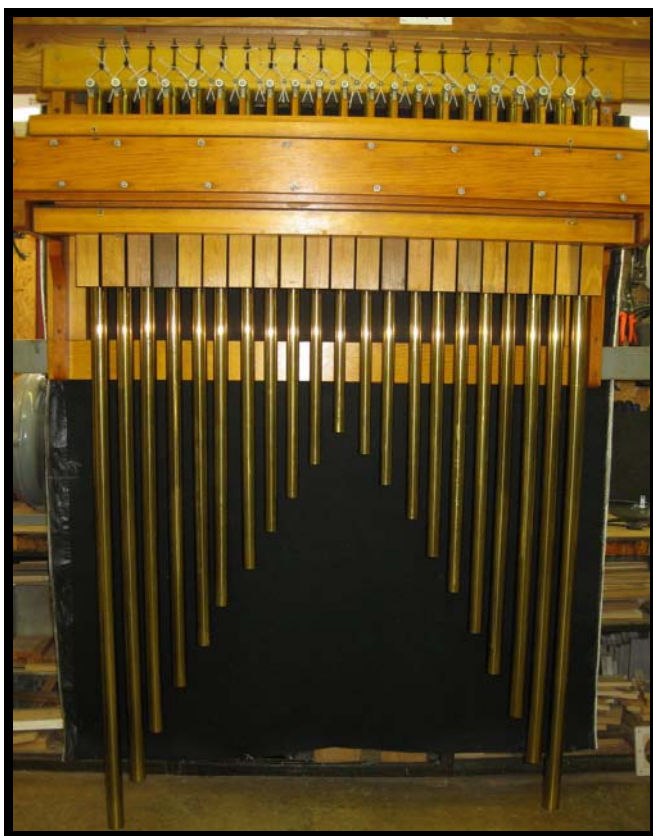
New floating top reservoirs for sale complete with built-in curtain valve, spring rails and springs are included.

Size 18"x24", 7 in stock asking: \$745

Size 24"x30", 6 in stock asking: \$845

Size 36"x48", 3 in stock asking: \$1290

## Chime Actions 4 sets available





**1-25 Mass Row, Not graduated, hollow with no end cap**

### **Moller Chimes**

**1-21 Moller - Deagan Solid action totally rebuilt, graduated, hollow with no end cap.**

**Asking \$3,900**

**Shop B, 1-25 Mayland, silver, hollow, graduated**

**Shop B, 1-21 Mass Rowe, FPC Humbolt, not graduated**

## Keyboards



- Klann 2-manual with walnut key cheeks, 15" plastic keys, spring coils in back and switches in back.

- 2-manual with black paint key cheeks, 15 ¾" ivory keys with 12 missing, regular touch, butterfly springs in front.
- Moller 2-manual with walnut key cheeks, 17 ½" ivory tops with swell tops coming off and great tops in good shape, switches removed from Great, coil springs in middle, switches in back.
- 2-manual with mahogany key cheeks, 10 ½" bone keys that are thin and chips on 1/3 of keys, switches and springs in back.
- 2-manual with black key cheeks, 14 ½" "ivoreen" keys with all tops good, coil springs in back attached to wiper.
- Reisner 2-manual with cherry key cheeks, 17 1/2" plastic key tops, coil springs 2/3 from front, switches in back. *(Replacement ivories available)*

---

## Equipment

### Wood Presses For Sale

Three foot tall and 25" wide,  
solid steel wood press.  
Others not shown will need  
to be sanded and painted.  
There are 4 available!



# Blowers

